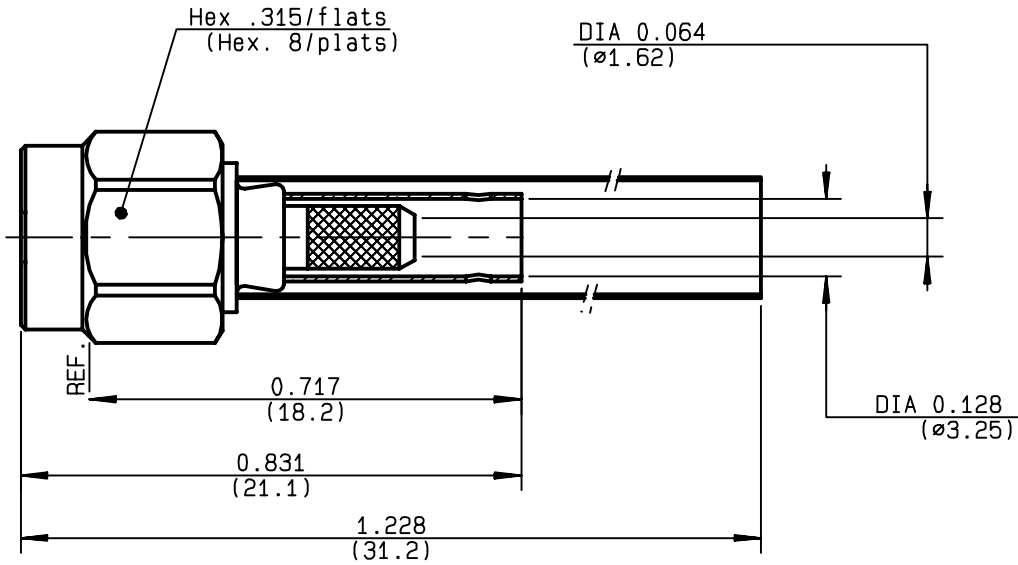


**STRAIGHT PLUG CRIMP TYPE
CABLE 2.6/50 S**

R125.072.001
SERIES SMA



NOMINAL IMPEDANCE	50 Ω	CABLES : KX 22A RG 188 RG 316
FREQUENCY RANGE	0-12.4 GHz	
TEMPERATURE RATING	-65/+165 °C	
V.S.W.R	1.15 + .02 x F(GHz)Maxi	
RF INSERTION LOSS	0.06 √F(GHz) dB Maxi	
VOLTAGE RATING	250 Veff Maxi	
DIELECTRIC WITHSTANDING VOLTAGE	750 Veff Mini	
INSULATION RESISTANCE	5000 MΩMini	OTHERS CHARACTERISTICS
HERMETIC SEAL	NA Atm.cm ³ /s	CABLE RETENTION 90 N Mini
LEAKAGE (pressurized only)	NA	CENTER CONTACT RETENTION
MECHANICAL DURABILITY	500 Cycles	Axial force - mating end NA N Mini
WEIGHT	gr	Axial force - opposite end 27 N Mini
SPECIFICATION		Torque NA cm.N Mini
		RECOMMENDED TORQUES
		Mating 100 cm.N
		Panel nut NA cm.N
		Clamp nut NA cm.N

CONNECTOR PARTS	MATERIALS	FINISH
BODY	STAINLESS STEEL	PASSIVATED .
OUTER CONTACT		
CENTER CONTACT	BRASS	GOLD 1.3 OVER NICKEL 2
INSULATOR	PTFE	-
GASKET	SILICONE RUBBER	-
OTHERS PIECES	STAINLESS STEEL	PASSIVATED .

(all values are given in micrometers)

ISSUE	CREATION DATE	FILE PART-NUMBER
9937G00	28/05/1990	



PICTON

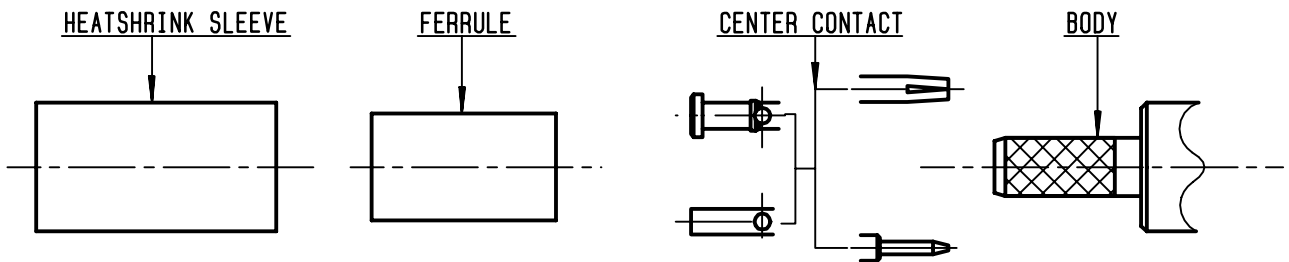
The information given here is subject to change without notice.
Design changes may be in order to improve the product .

Connect to the future



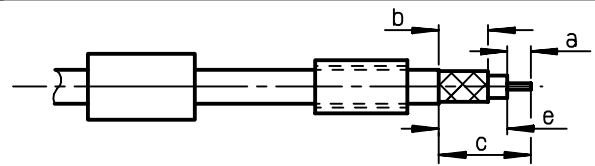
R125.072.001

ISSUE 9937G00 SERIES SMA



①

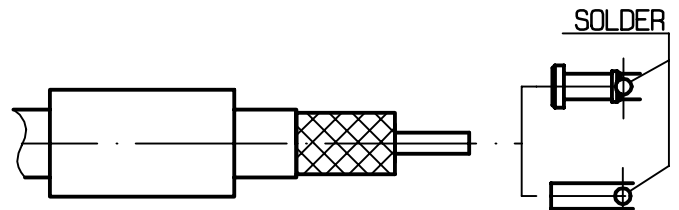
Slide ferrule and heatshrink sleeve onto the cable .
Strip the cable .
-
-



Stripping	a	b	c	d	e
inch	0.079	0.276	0.354	0	0
mm	2	7	9		

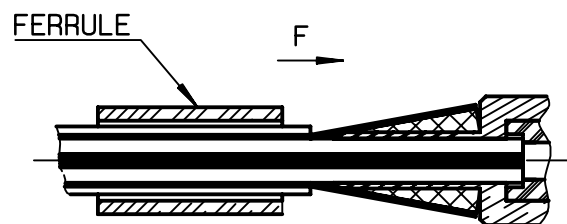
②

Slide center contact on until it bottoms against cable dielectric .
Solder center contact .
Clean soldered area .
-
-



③

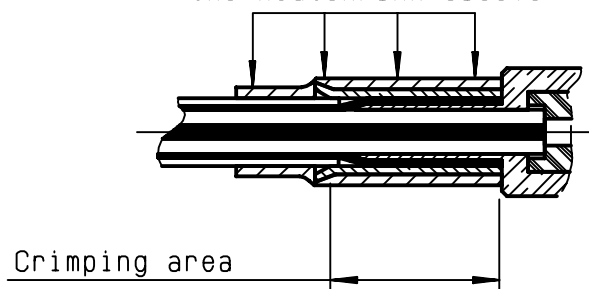
Fan the braid .
Slide cable into body until it bottoms against insulator .
Slide ferrule over the braid .
(In direction F)



④

Crimp the ferrule with crimping tool R 282 211 000 (Hex. : 0.128) or crimping tool R 282 293 000 (M22520/5-01) and dies R 282 235 003 (M22520/5-03)
Cut the excess braid if necessary .
Slide sleeve over ferrule and heatshrink in place .
-
-

Shrink the heatshrink sleeve



PICTON